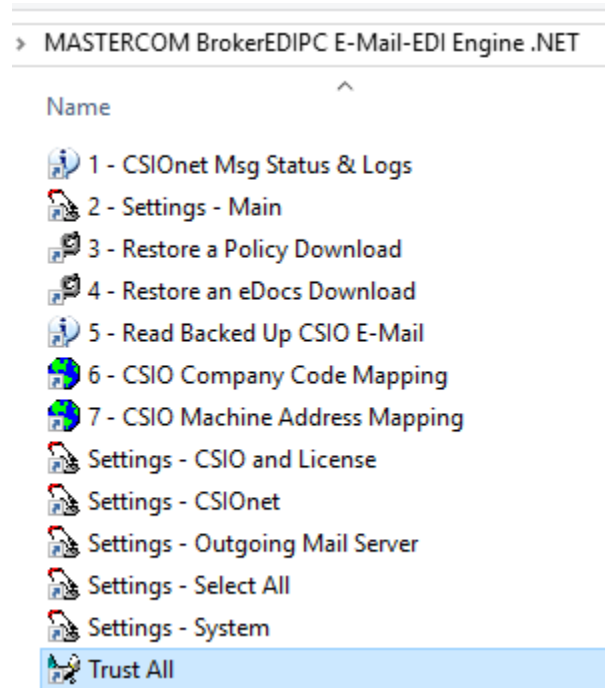
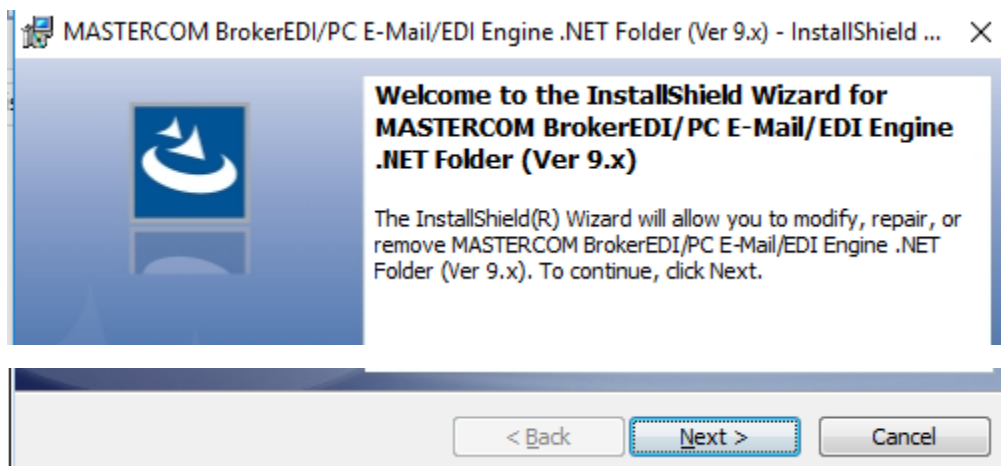


If the mapped drive letter is changed for Power Broker, then the shortcuts in **MASTERCOM BrokerEDIPC E-Mail-EDI Engine .NET** program folder, as shown below, have to be updated to point to the new mapped drive.

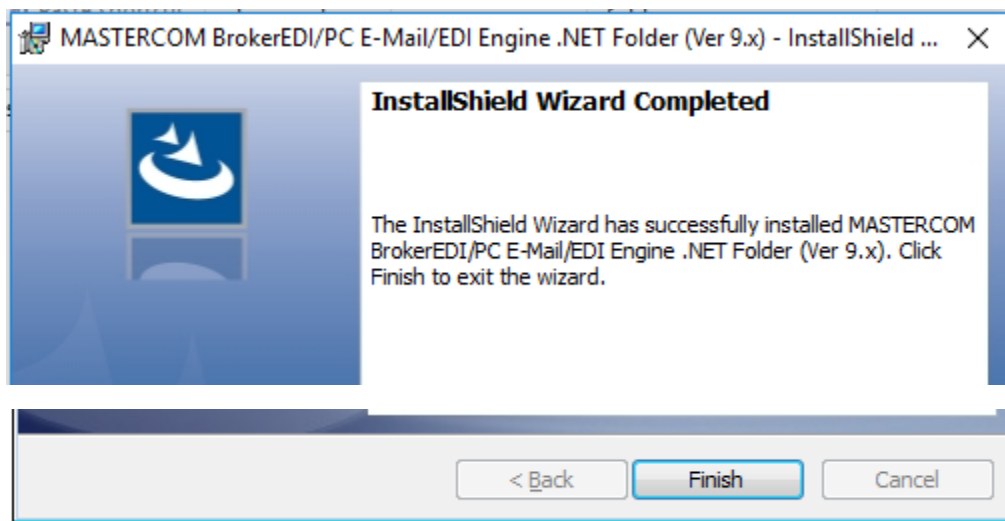


To update the shortcuts:

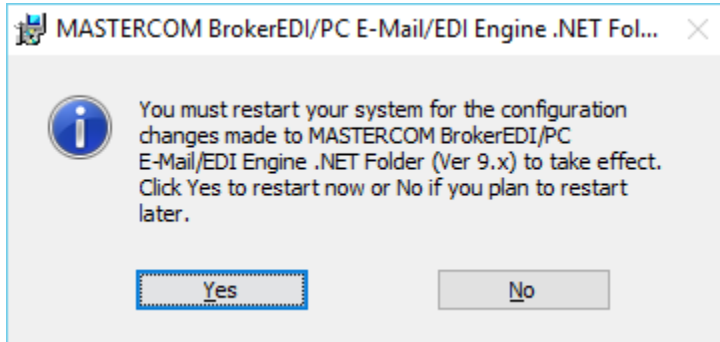
- 1) Explore to the \EMAIL directory and double-click **Setupppc.exe** to start the installation, as shown below.



- 2) Click the **Next >** button to continue.



- 3) Click the **Finish** button to finish the installation and you will then be prompted to restart the computer.



- 4) Click the **Yes** button to restart.