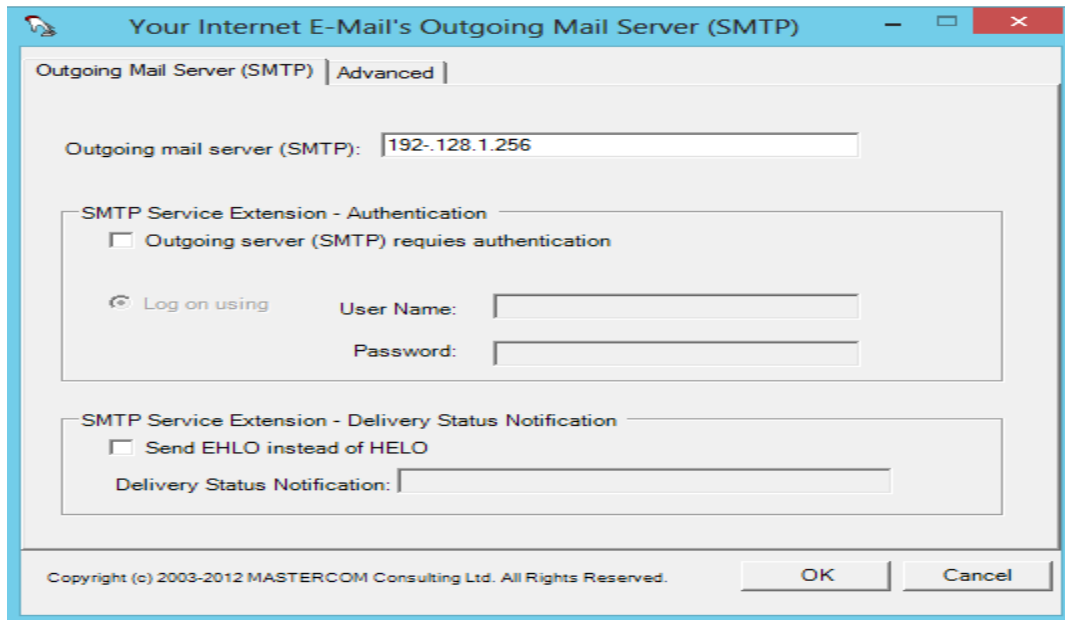


HD0006 Settings for Microsoft Exchange Server

The settings for the Microsoft Exchange Server are specified in “**Settings-Outgoing Mail Server**”. These settings are used by the Engine to send alert and error messages to user’s email addresses specified in “**Settings –System**”. Note: The EDI settings for sending policy upload and retrieving policy download from insurance companies are specified in “Settings - CSIONet”

- 1) Enter the IP address of the PC hosting your Microsoft Exchange server in the “**Outgoing mail server (SMTP):**” field as shown below.



- 2) If Microsoft Exchange server port is other 25, click the “**Advanced**” tab and enter the port number in **Outgoing server (SMTP):** port number field, as shown below.

