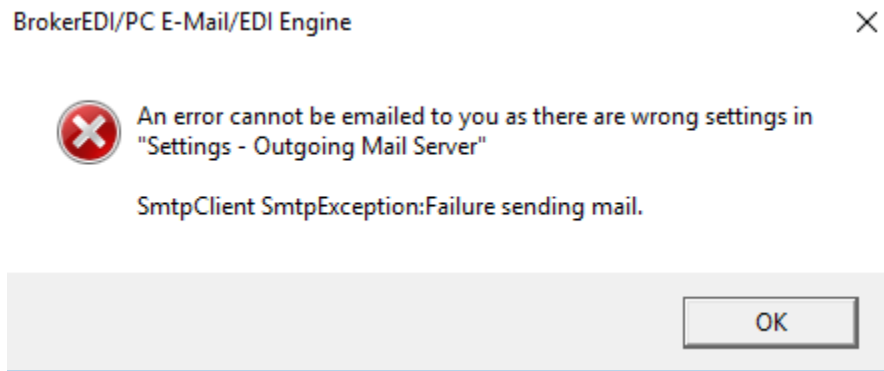


HD0003 "An Error Cannot Be Emailed To You.."

This error alerts the user that the his/her email settings are wrong.



- 1) Select **Start, All Programs, MASTERCOM BrokerEDIPC E-Mail-EDI Engine .NET** program folder and then select the **Settings - Outgoing Mail Server** program-item.
- 2) Please see "HD0004 Settings for Office 365, Google Gmail & Bell Sympatico.pdf" for sample settings.

