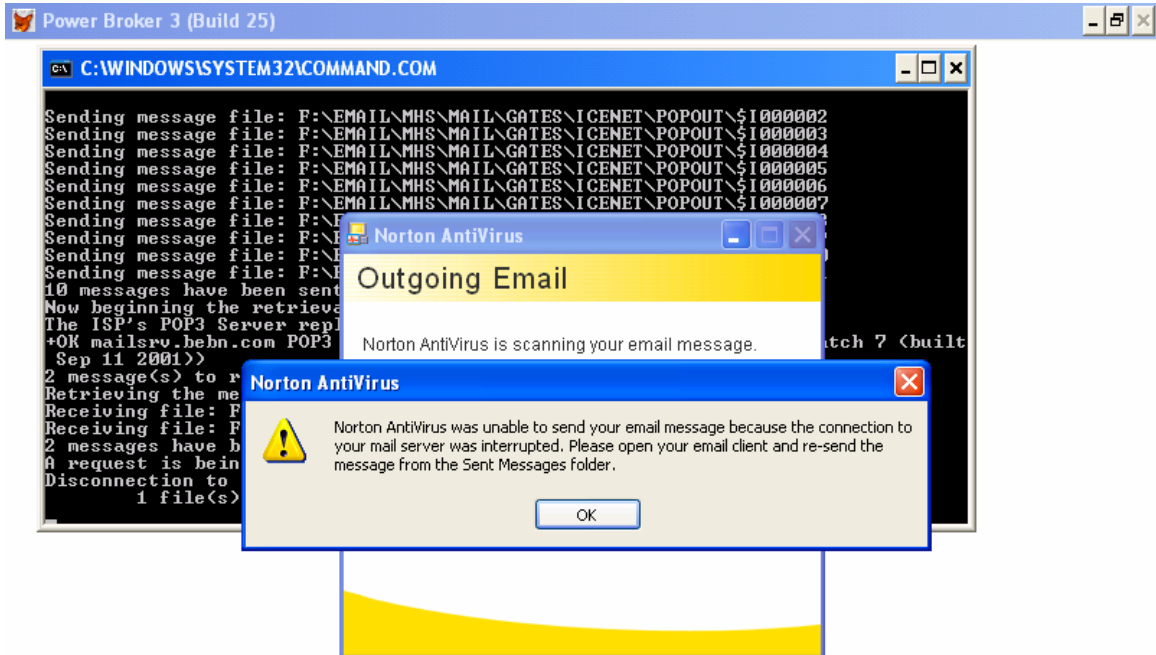


Firewall & Antivirus Setups Info Sheet

For your Firewall/Antivirus software give xmailer.exe rights to ports 25 and 110. Your Firewall/Antivirus should allow the program **xmailer.exe** located, in the **\EMAIL\EXE** directory, to use ports 25 and 110.

Also configure your Antivirus to not scan incoming and outgoing e-mail received/sent by XMAILER.EXE.

If this does not work then turn off "Scan Outgoing Email" and "Scan Incoming Email"



What is happening is Norton Antivirus intercepts the messages being sent, checks them for viruses, and then resends them. The BrokerEDI/PC E-Mail/EDI Engine does not know the messages have been intercepted, and when it has finished receiving them, it disconnects the communication line before Norton Antivirus has sent the messages, resulting in the Norton Antivirus error message "... unable to send your email message.. ". To solve this, you must turn off "Scan Outgoing Email".