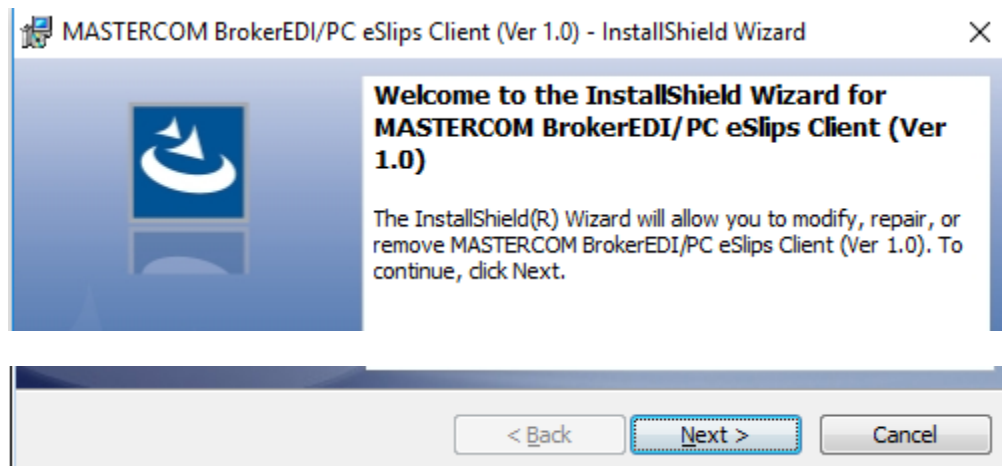
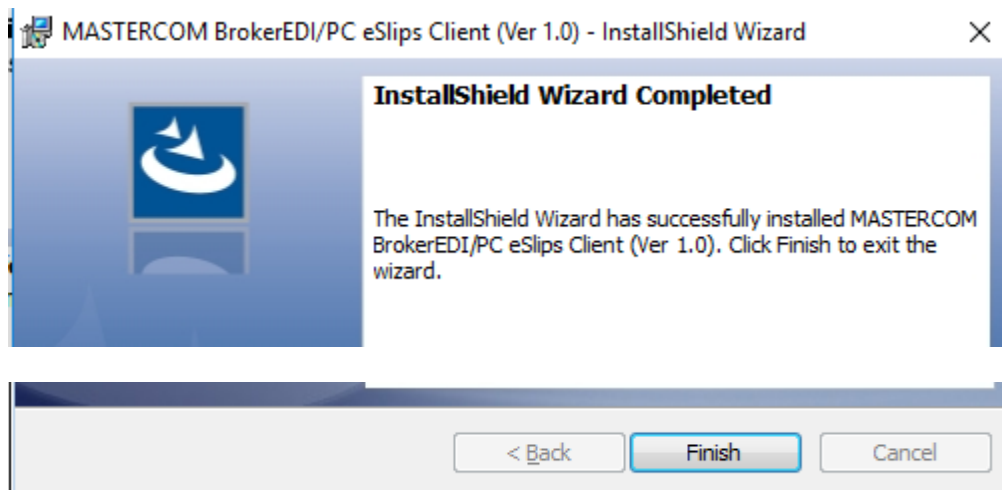


Setting up a client computer for eSlips consists of creating a user's %appdata%\MASTERCOM\EDELIVERY folder and a "eSlips User Logs" shortcut.

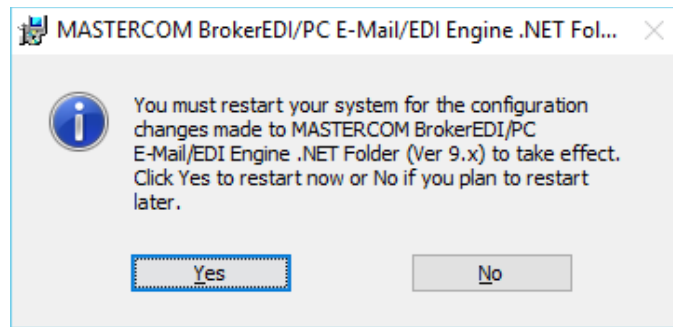
- 1) To setup the user's PC for eSlips, explore to the \EMAIL folder, find and run **setupeSlipsClient.exe**.



- 2) Click the **Next >** button to continue.



- 3) Click the **Finish** button to finish the installation and you will then be prompted to restart the computer.



4) Click the “Yes” button to restart.

Check that the following “**MASTERCOM BrokerEDIPC eSlips Client**” program folder has been added to your list of programs.

