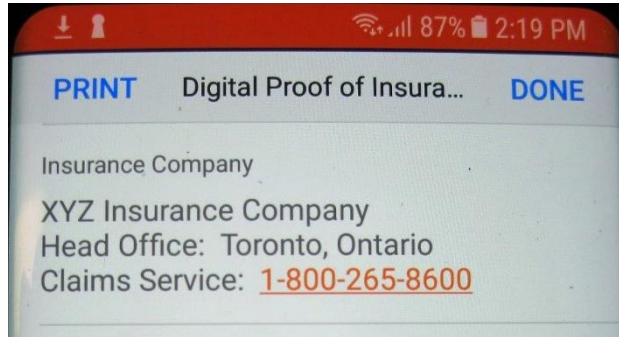


ES0003 Specifying an Insurance Company's Carrier Details

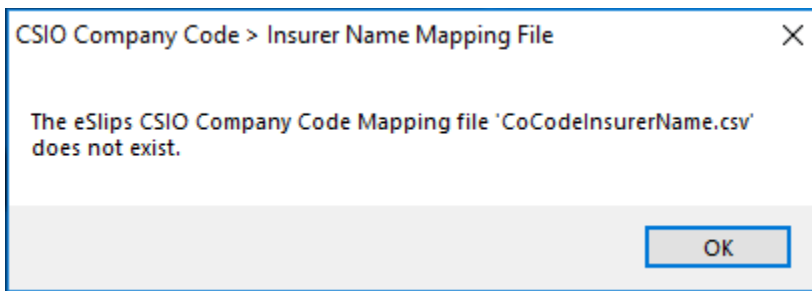
If you wish to have carrier details, as illustrated below, other than the Power Broker default carrier details, these carrier details would be specified in a file located in the “\EMAIL\ EDELIVERYSERVICES\REMARKSINFO\CarrierDetails” folder.



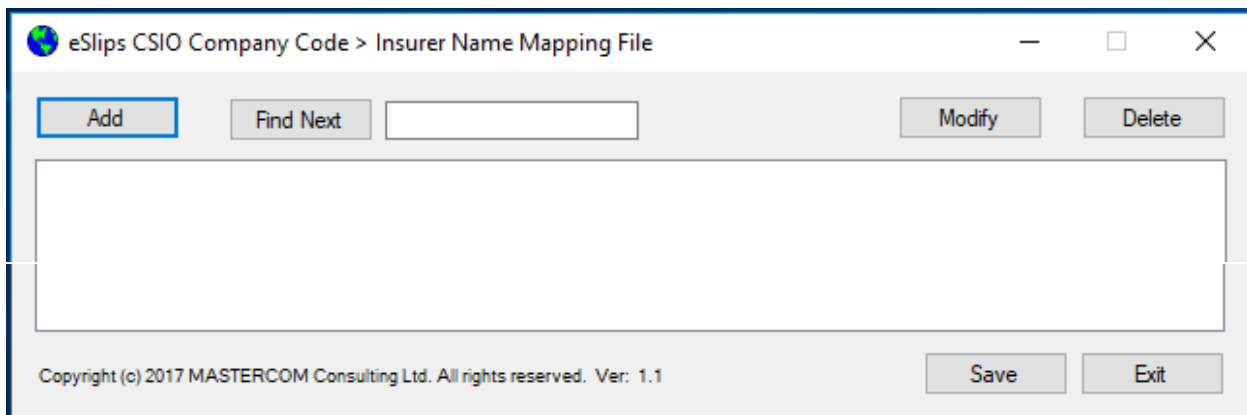
The carrier details filename is the insurance company name specified in the Company Code Mapping table.

- 1) Choose the “9 - eSlips Company Code Mapping” program short-cut.

If the mapping file has never been initialized with its first entry you will get:

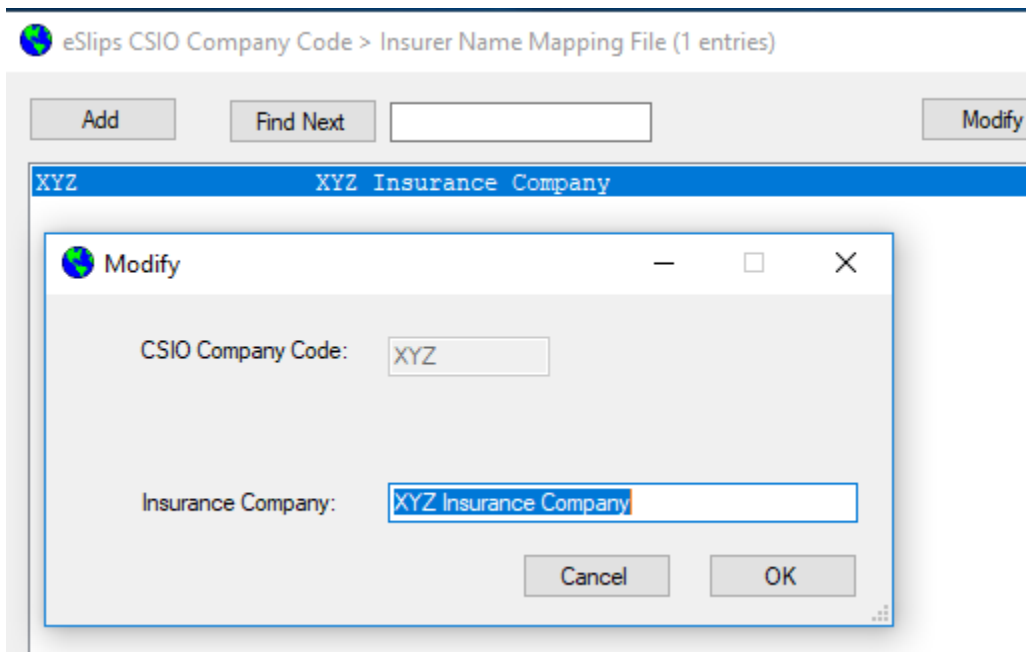


- 2) Click the “OK” button to continue.

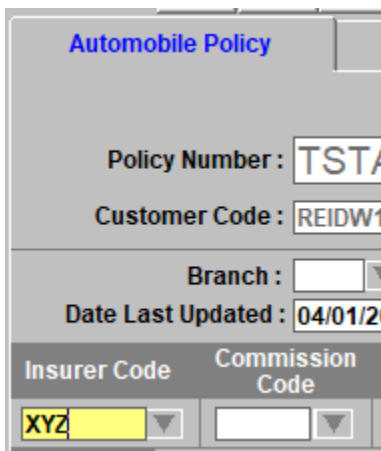


ES0003 Specifying an Insurance Company's Carrier Details

- 3) Click the “**Add**” button to add an entry.

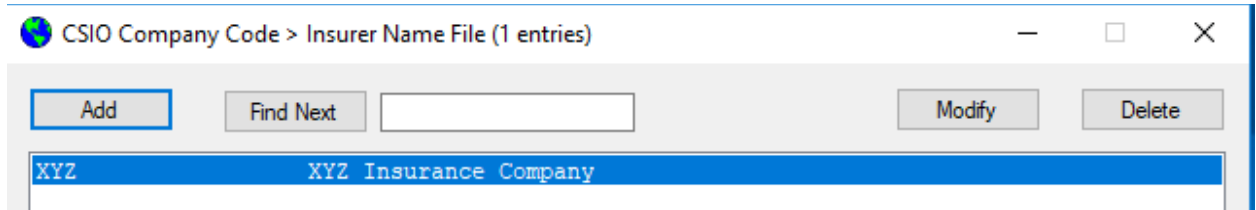


- 4) Specify the “**CSIO Company Code:**” field as the value found in the Power Broker “**Insurer Code**” field, as shown below.

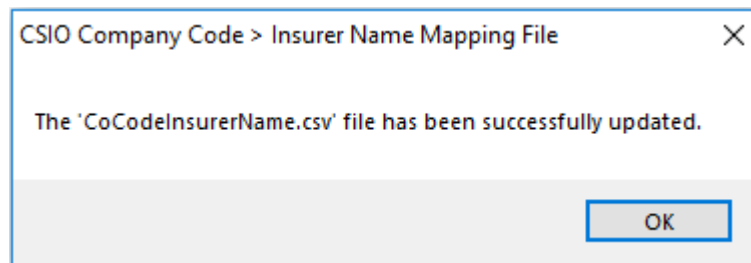
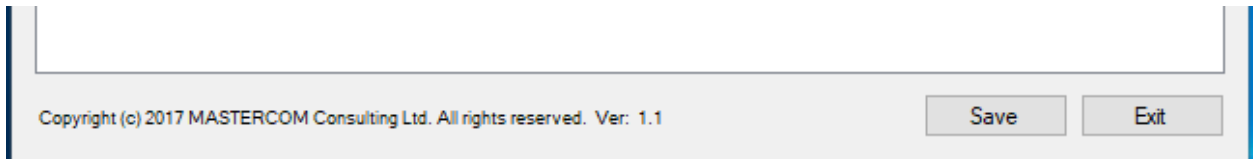


- 5) The “**Insurance Company:**” field names the insurance company which will become the name of the carrier’s details file for that insurance company.
- 6) Click the “**OK**” button to add this entry to the table.

ES0003 Specifying an Insurance Company's Carrier Details

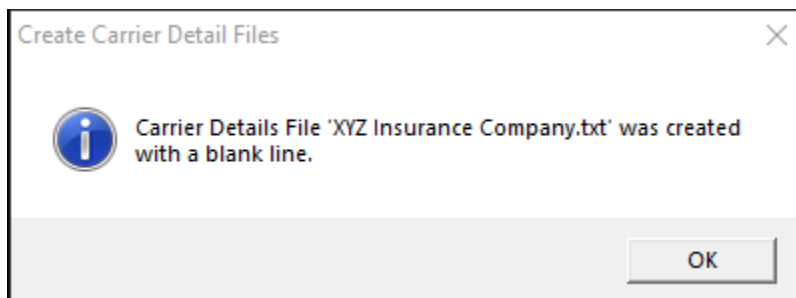


- 7) To save the updated table to the “CoCodeInsurerName.csv” file, click the “**Save**” button.



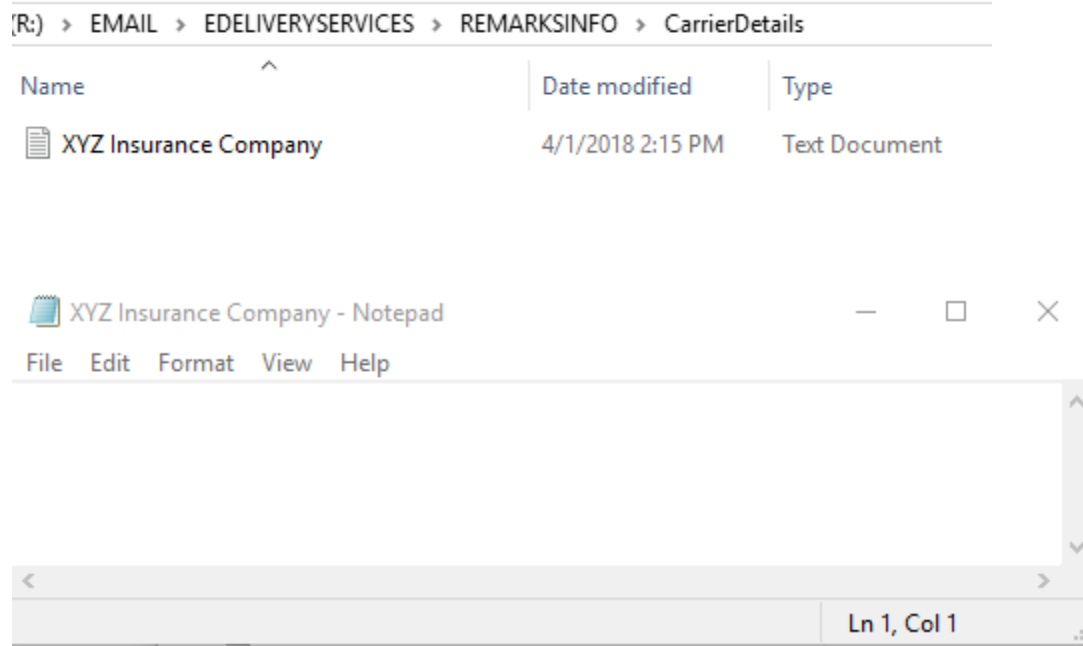
- 8) Click the “**OK**” button and the “**Exit**” button to exit.
- 9) To create the carrier details file, explore to the “\EMAIL\EDELIVERYSERVICES\EXE” directory and run the “**CreateCarrierDetailFiles.exe**” program.

You will get the dialog box, shown below, to indicate that the carrier details text file was successfully created.



- 10) Explore to the “\EMAIL\EDELIVERYSERVICES\REMARKSINFO\CarrierDetails” folder, as shown below, and double-click the file name and notepad will display a blank file for you to enter the carrier details.

ES0003 Specifying an Insurance Company's Carrier Details



11) Enter the carrier details and then File, Save, File, Exit.