

**MASTERCAM Consulting Ltd.
BrokerEDI/PC E-Mail/EDI Engine -
Power Broker Interface**

File Interface

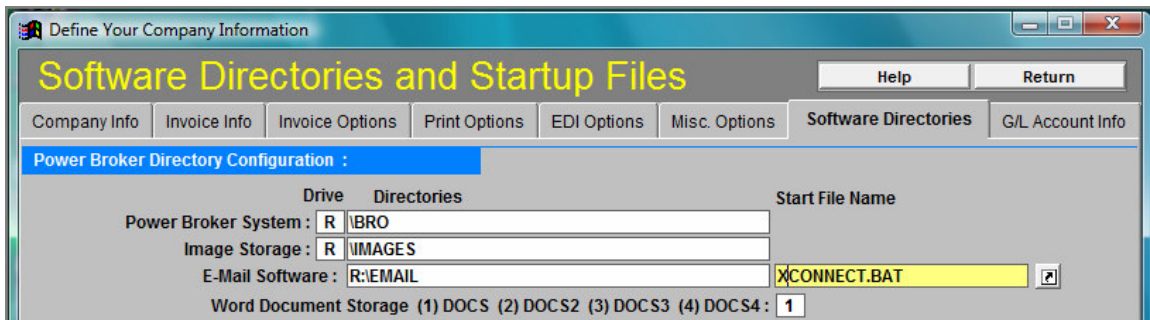
Upload

E-Mail

Power Broker creates files with a IDF extension in the \EMAIL directory.

EDI

Power Broker creates upload policy files in the \EMAIL\MHS\MAIL\GATES\ICENET\TROUT directory. These files have no extension and will be named the same as the contract number. To check what files are being queued in \TROUT by Power Broker, disable the Engine from being run by selecting the **Utilities** button, **Define Your Company Information, Software Directories** tab and put an X in front of CONNECT.BAT, shown below, to prevent the Engine from being run.



Download

E-Mail

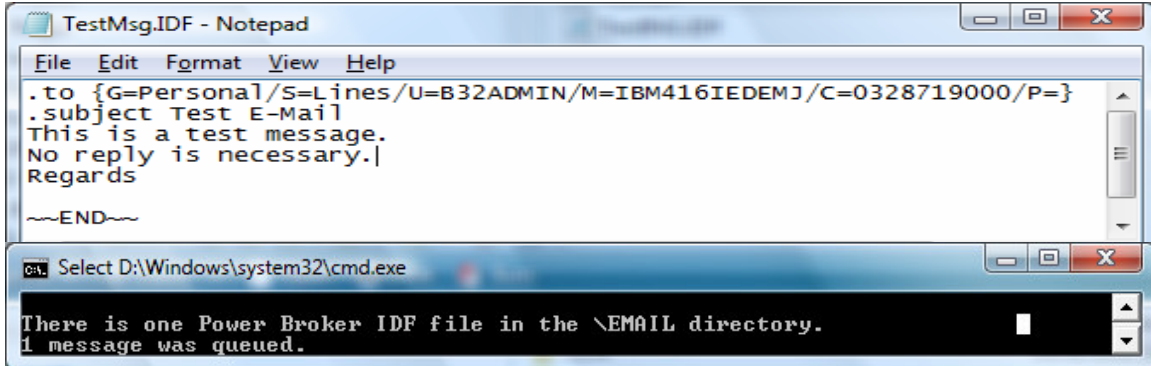
The BrokerEDI/PC E-Mail/EDI Engine strips the e-mail from the downloaded files, converts it from CSIO EDI format to ASCII format and spools it in the MAILRECV.RML file.

EDI

The BrokerEDI/PC E-Mail/EDI Engine strips policy data from the downloaded files and spools it into an insurance company named file with the extension of DAT e.g. ROYI0P.DAT

Power Broker E-Mail IDF Message File Flow

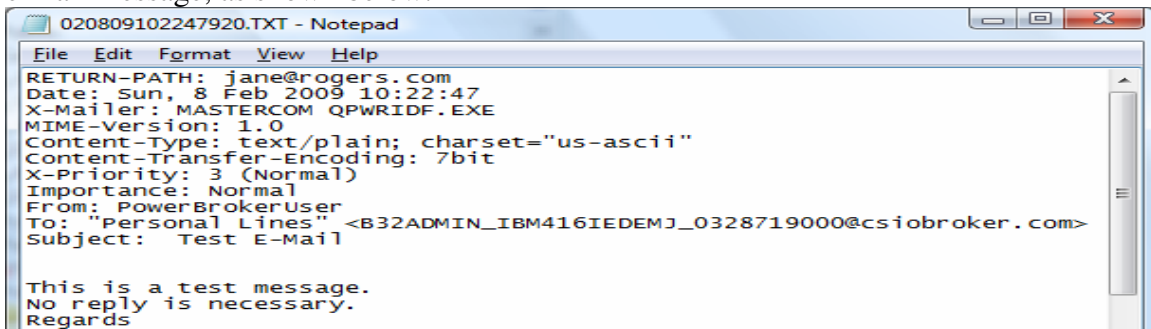
Power Broker creates e-mail as files with IDF extensions in the \EMAIL directory, as illustrated below.



```
TestMsg.IDF - Notepad
File Edit Format View Help
.to {G=Personal/S=Lines/U=B32ADMIN/M=IBM416IEDEMJ/C=0328719000/P=}
.subject Test E-Mail
This is a test message.
No reply is necessary.
Regards
~--END~

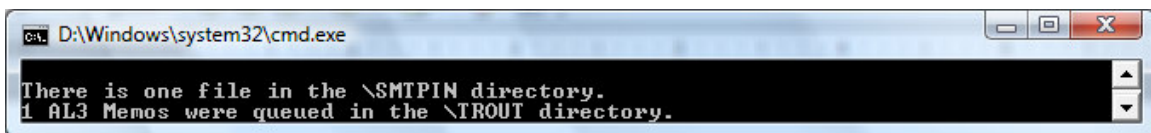
C:\> Select D:\Windows\system32\cmd.exe
There is one Power Broker IDF file in the \EMAIL directory.
1 message was queued.
```

MASTERCOM's **QPwrIDF.exe** program queues the IDF files in the \EMAIL\AL3MAIL\SMTPIN directory where the IDF file is converted to an Internet formatted e-mail message, as shown below.



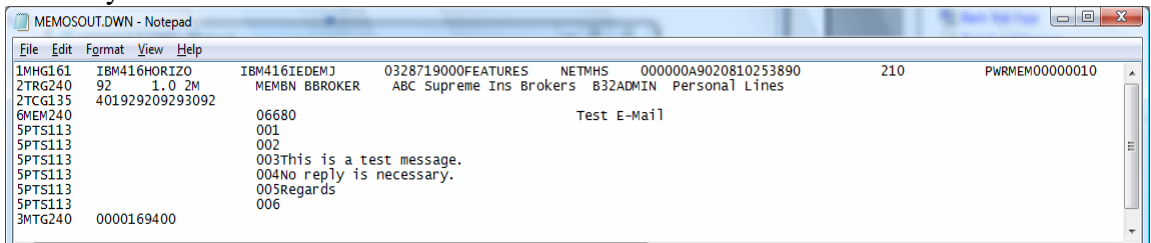
```
020809102247920.TXT - Notepad
File Edit Format View Help
RETURN-PATH: jane@rogers.com
Date: Sun, 8 Feb 2009 10:22:47
X-Mailer: MASTERCOM QPWRIDF.EXE
MIME-Version: 1.0
Content-Type: text/plain; charset="us-ascii"
Content-Transfer-Encoding: 7bit
X-Priority: 3 (Normal)
Importance: Normal
From: PowerBrokerUser
To: "Personal Lines" <B32ADMIN_IBM416IEDEMJ_0328719000@csiobroker.com>
Subject: Test E-Mail

This is a test message.
No reply is necessary.
Regards
```



```
D:\Windows\system32\cmd.exe
There is one file in the \SMTPIN directory.
1 AL3 Memos were queued in the \TROUT directory.
```

MASTERCOM's **AL3MailOut.exe** program converts the Internet formatted e-mail message into a CSIO formatted memo transaction, as shown below, and spools it into a MEMOSOUT.DWN file located in the \EMAIL\MHS\MAIL\GATES\ICENET\TROUT directory.

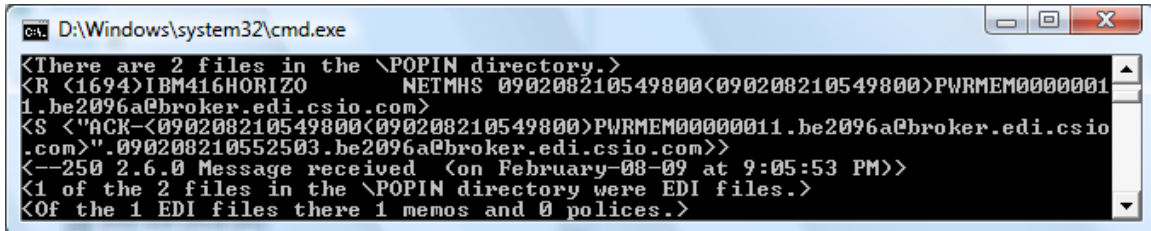


```
MEMOSOUT.DWN - Notepad
File Edit Format View Help
1MHG161 IBM416HORIZO IBM416IEDEMJ 0328719000FEATURES NETMHS 000000A9020810253890 210 PWRMEM00000010
2TRG240 92 1.0 2M MEMBN BBROKER ABC Supreme Ins Brokers B32ADMIN Personal Lines
2TCG135 401929209293092
6MEM240 06680 Test E-Mail
5PTS113 001
5PTS113 002
5PTS113 003This is a test message.
5PTS113 004No reply is necessary.
5PTS113 005Regards
5PTS113 006
3MTG240 0000169400
```

From the VTROUT directory MASTERCOM's **Xmailer.exe** program sends the file to the insurance company's CSIONet mailbox.

Received File Flow

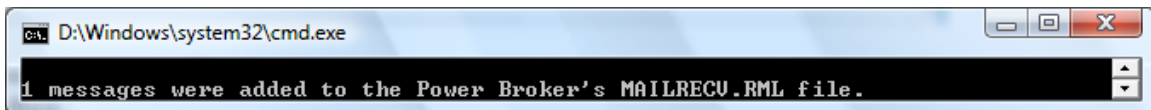
MASTERCOM's **Xmailer.exe** program reads the brokers' POP mailbox and receives Internet formatted files which are demimed. E-mail memo transactions are spooled into a \$MEMOS file in the \EMAIL\MHS\MEMOSIN directory and downloaded policy transactions are placed in the \EMAIL directory with the extension of DAT.



```
D:\Windows\system32\cmd.exe
<There are 2 files in the \POPIN directory.>
<R (1694)IBM416HORIZO NETMHS 090208210549800(090208210549800)PWRMEM0000001
1.be2096a@broker.edi.csio.com>
<S <\"ACK-090208210549800(090208210549800)PWRMEM00000011.be2096a@broker.edi.csio
.com>\".090208210552503.be2096a@broker.edi.csio.com>>
<--250 2.6.0 Message received (on February-08-09 at 9:05:53 PM)>
<1 of the 2 files in the \POPIN directory were EDI files.>
<Of the 1 EDI files there 1 memos and 0 polices.>
```

Note: Xmailer.exe, above, indicates that there were two files received into the \POPIN directory but there was only one EDI file and that one was a memo transaction. The other file was either a Delivery Status message or Acknowledge message for a previously sent file.

MASTERCOM's **AL3MemosToRML.exe** program converts CSIO formatted e-mail files which have been spooled into the \$MEMOS file to Power Broker formatted e-mail files in the MAILRECV.RML file.



```
D:\Windows\system32\cmd.exe
1 messages were added to the Power Broker's MAILRECV.RML file.
```

Note: If no e-mail was received the MAILRECV.RML file has zero bytes.

Checking that Power Broker Processes all Received Files

Go to the \EMAIL directory and run CONNECT.BAT. After the communications session is finished check the \EMAIL directory for the **MAILRECV.RML** file. All received CSIO formatted e-mail memos are put into this file. If no CSIO e-mail memos was received this file has zero bytes. For downloaded policies, check for any files that have an extension of **DAT**. There will be a DAT file for every insurance company that has downloaded a policy file(s). Now from Power Broker do a "Send and Receive E-Mail/Policies" and click the "Proceed" button to do a communications session and Power Broker should read in your e-mail after the session is finished. Then do a "Reformat" and "Merge" to process your download. To complete the check that all the e-mail memos and download was processed by Power Broker go to the \EMAIL directory and check that the **MAILRECV.RML** file has zero bytes and that there are no files that have an extension of **DAT**.